



PAINTING TEXTURES: **MARBLE**



**ARMORED
KOMODO**
HEAVY INDUSTRIES

MATERIALS NEEDED

- Baby wipes/ Wet wipes
- Binder clips [To hold the stretched wipes in place]
- Armored Komodo Paints

STEP 1 DRY AND STRETCH

Dry the wet wipes, then carefully stretch it out in different areas.
The more random the “fibers” are, the better.



**ARMORED
KOMODO**
HEAVY INDUSTRIES

PAINTS NEEDED



*paints on photo are lacquer based



LAYER 1:
Gloss Gray Surface Primer



LAYER 2:
Charcoal Black



**ARMORED
KOMODO**
HEAVY INDUSTRIES

LAYER 3:

Aluminum + wet wipe wrapping

Similar to the carbon fiber effect, just wrap the wipe/cloth and arrange the fibers as you want and secure it with the binder.



**ARMORED
KOMODO**
HEAVY INDUSTRIES

(OPTIONAL LAYER)

CLEAR COLOR OF CHOICE

After the **Aluminum Layer (3)**

You can add a clear color of choice to add character to your marble effect.



*paints on photo are lacquer based

LAYER 4, AND RESULT:

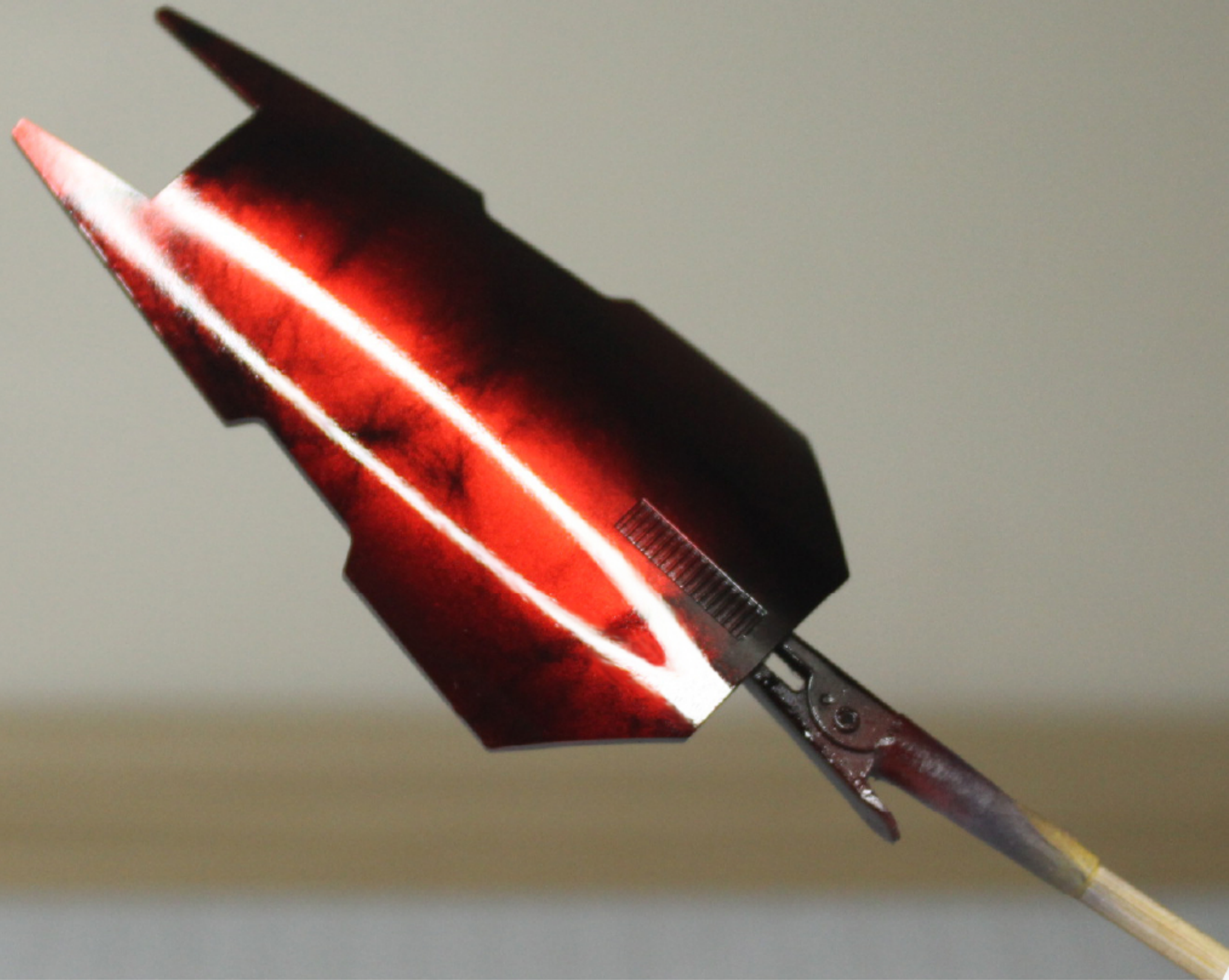
Mirror gloss



**ARMORED
KOMODO**
HEAVY INDUSTRIES

OPTIONAL LAYER 5, AND RESULT:

Mirror gloss



**ARMORED
KOMODO**
HEAVY INDUSTRIES